

# Italian Dress, Mostly 1530s

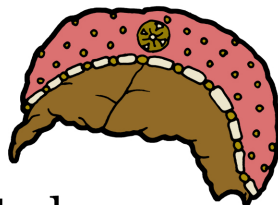
Hair  
1530s

Topaz

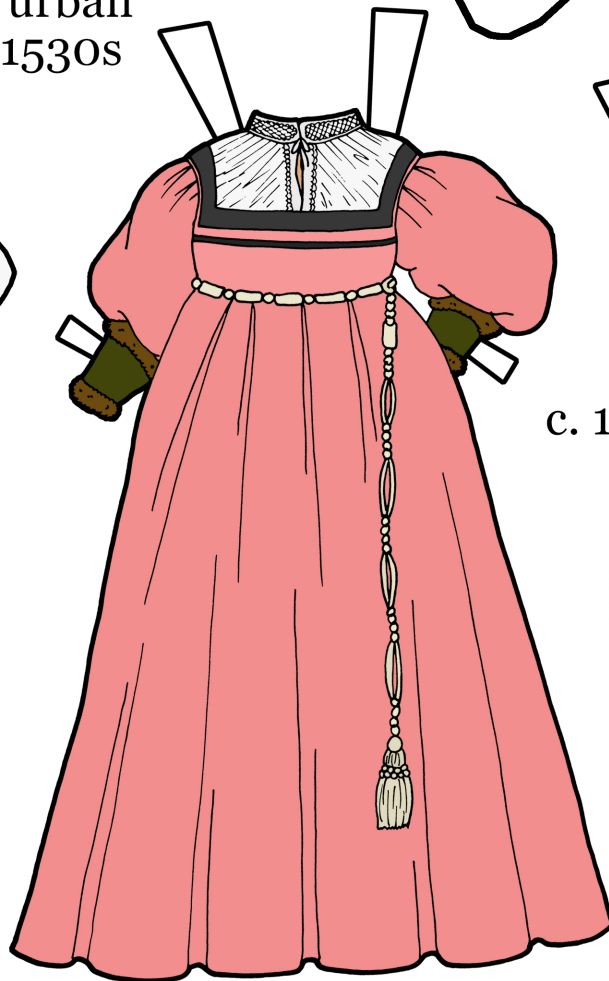
Shoes  
c. 1500s



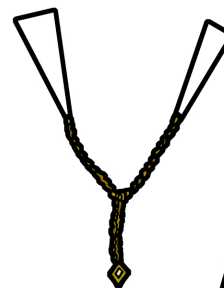
Turban  
1530s



Paste to  
back of  
Turban



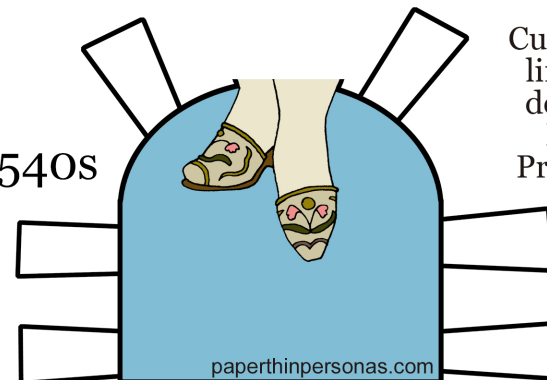
c. 1530s



c. 1536



c. 1540s



Cut along dark  
lines and/or  
dotted lines.  
Mount or  
Print on Card.

Due to this paper doll's underwear, some of the Jewels and Gemstones 2.0  
paper doll clothing may not fit.