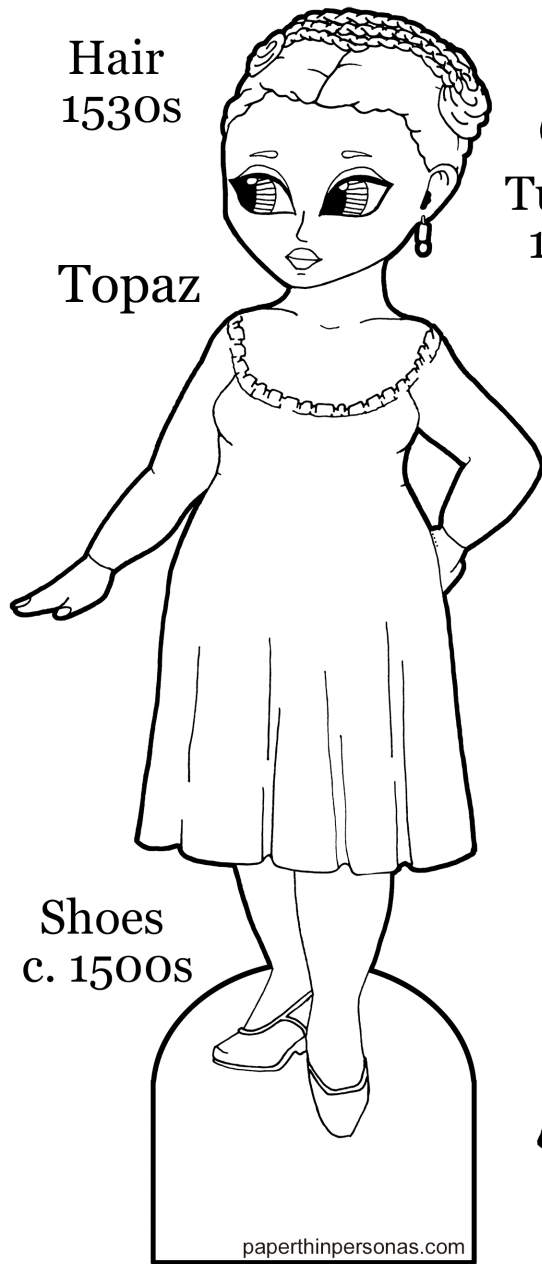


Italian Dress, Mostly 1530s

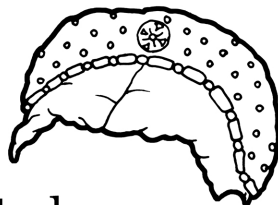
Hair
1530s

Topaz

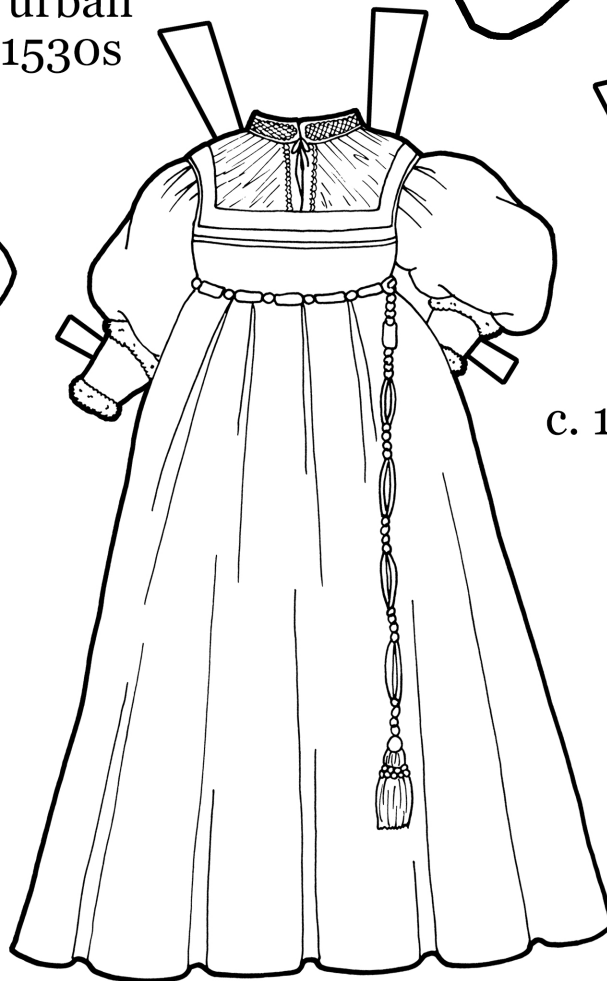
Shoes
c. 1500s



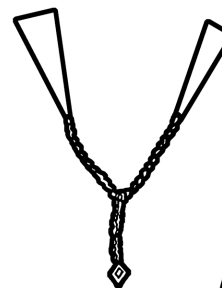
Turban
1530s



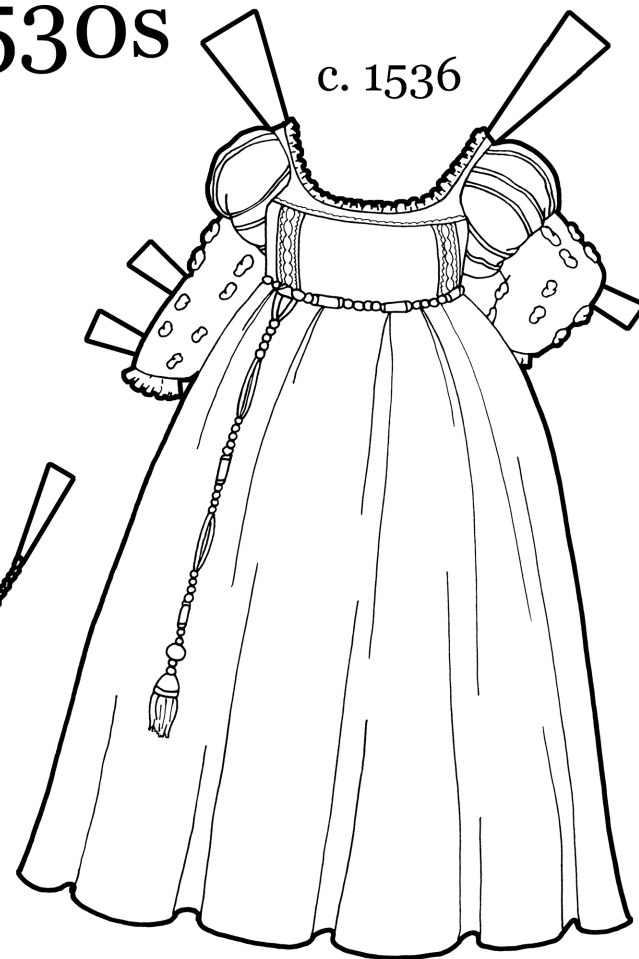
Paste to
back of
Turban



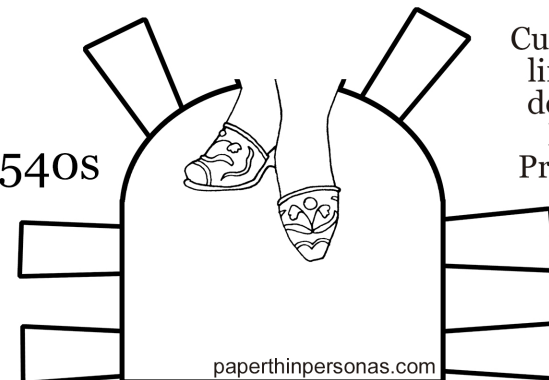
c. 1530s



c. 1536



c. 1540s



Cut along dark
lines and/or
dotted lines.
Mount or
Print on Card.

Due to this paper doll's underwear, some of the Jewels and Gemstones 2.0
paper doll clothing may not fit.