

Mostly Early 1500s Italy

c. 1530
Florence

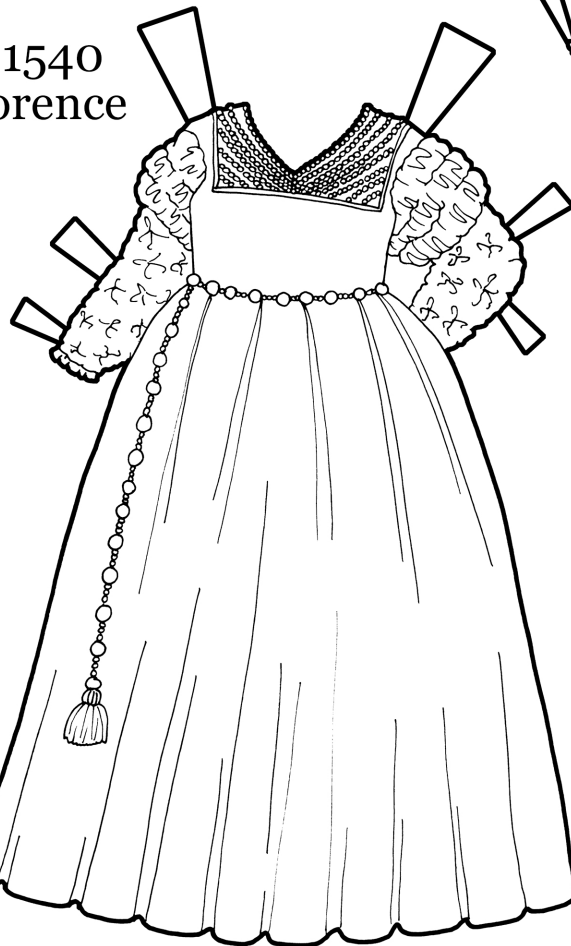


Paste to
Back of
Turban

c. 1530
Florence

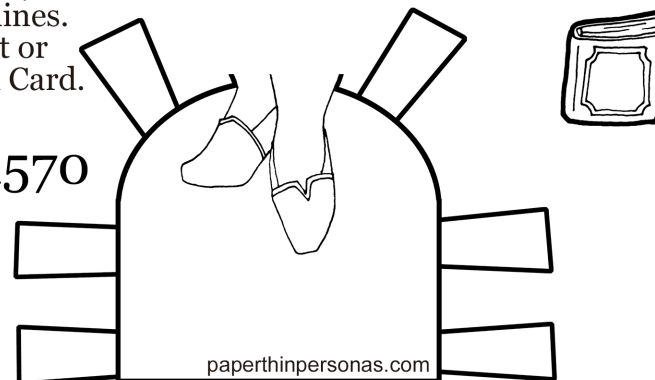


c. 1540
Florence



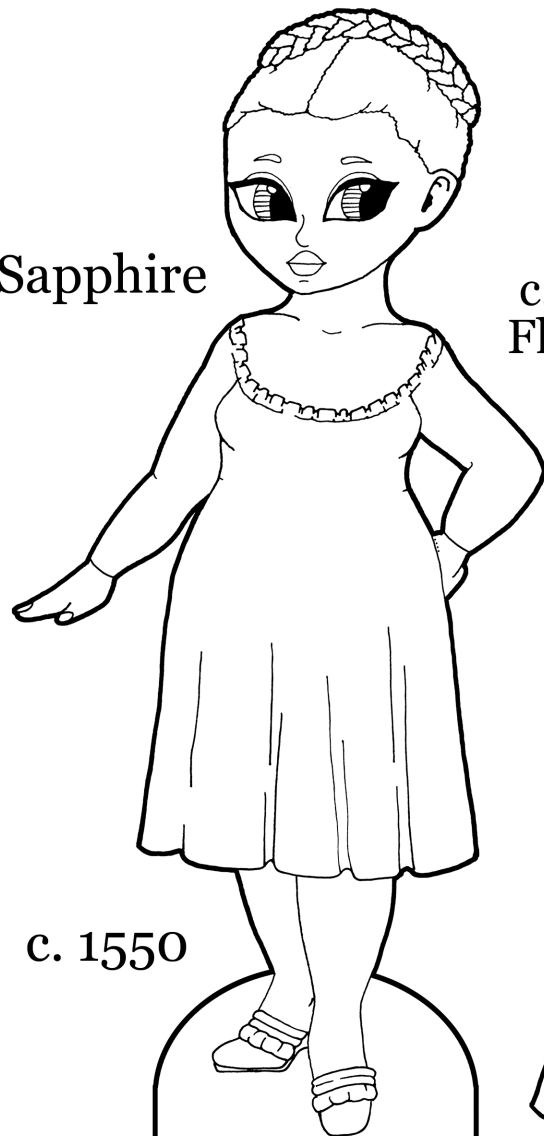
Cut along dark
lines and/or
dotted lines.
Mount or
Print on Card.

c. 1570



paperthinpersonas.com

c. 1550



paperthinpersonas.com

Due to this paper doll's underwear, some of the Jewels and Gemstones 2.0
paper doll clothing may not fit.