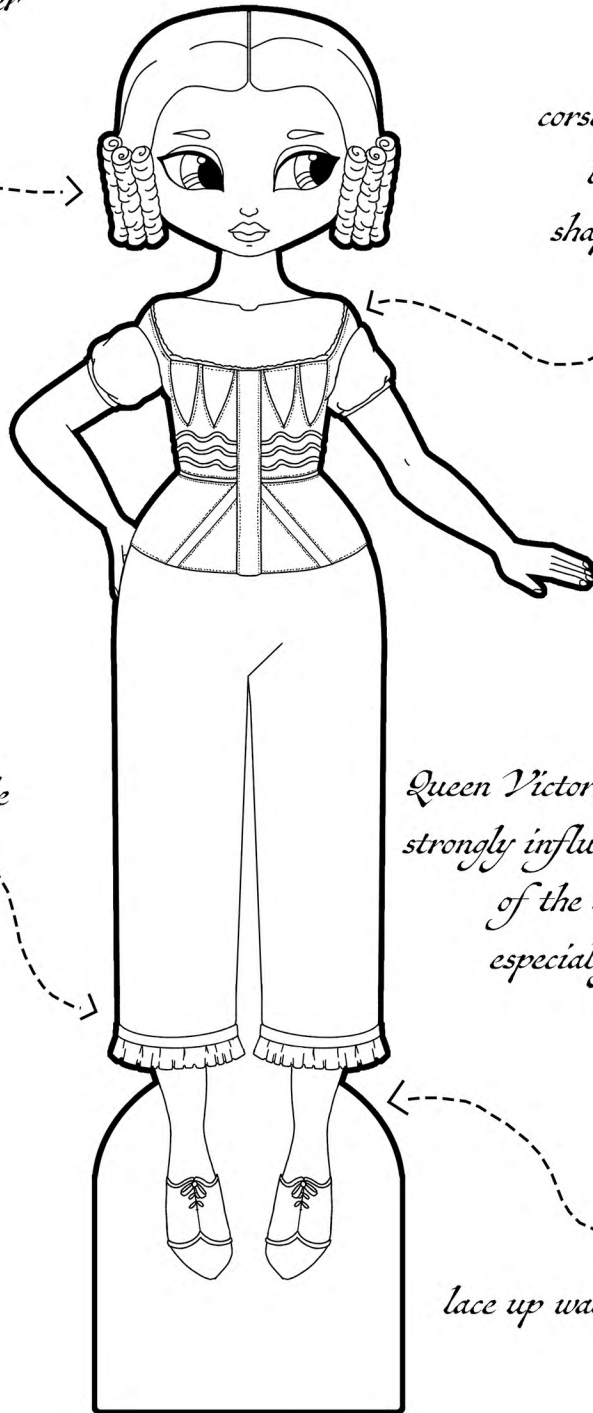


*hair parted at the center  
with ringlet curls  
covering the ears*

*corset with minimal  
boning to give  
shape and support*



*pantalettes with ruffle  
at the bottom*

*Queen Victoria's 1837 accession  
strongly influences the fashions  
of the late 1830s,  
especially hairstyles*

*lace up walking slippers*

# *Late 1830s Paper Doll*