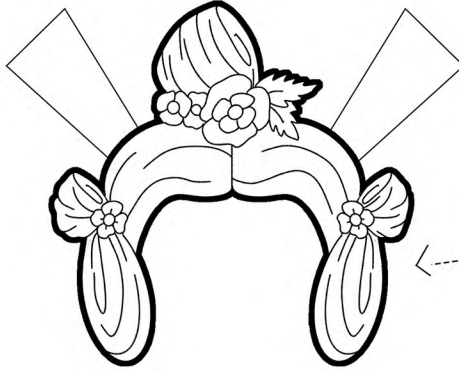
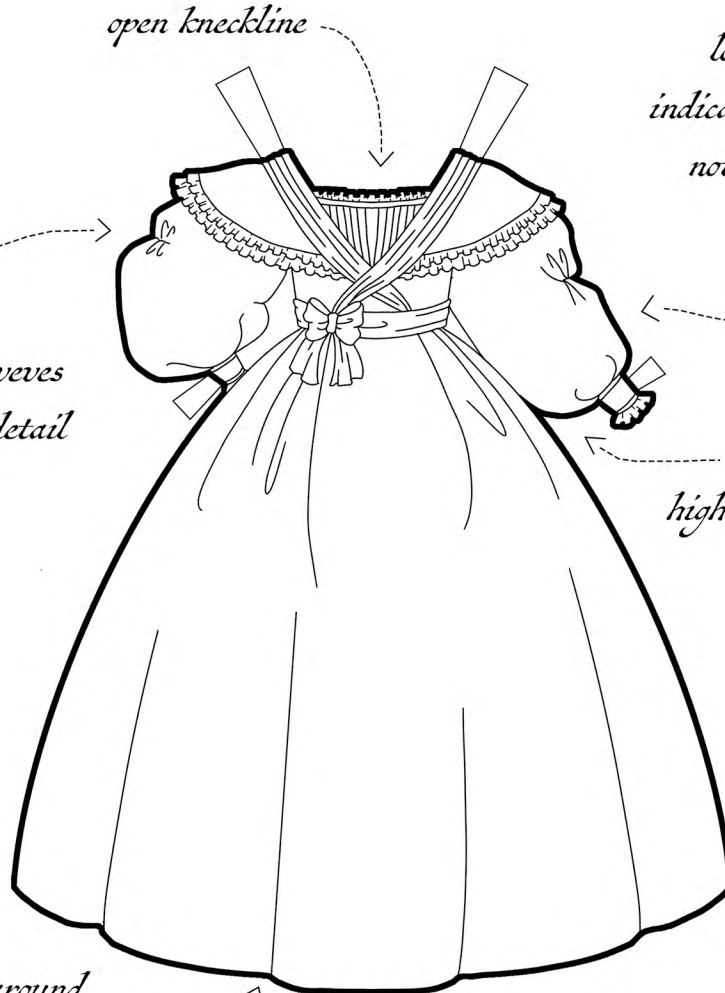


*design from  
Ladies' Pocket Magazine  
published August 1835*



*hair styled over  
the ears with top knot*



*open neckline*

*long sleeves  
indicate that this is  
not a ball gown*

*full gigot sleeves  
with gathered detail*

*ribbon belt  
highlights the waist*

*full skirt hits around  
the ankles*

# *1835 Evening Dress*