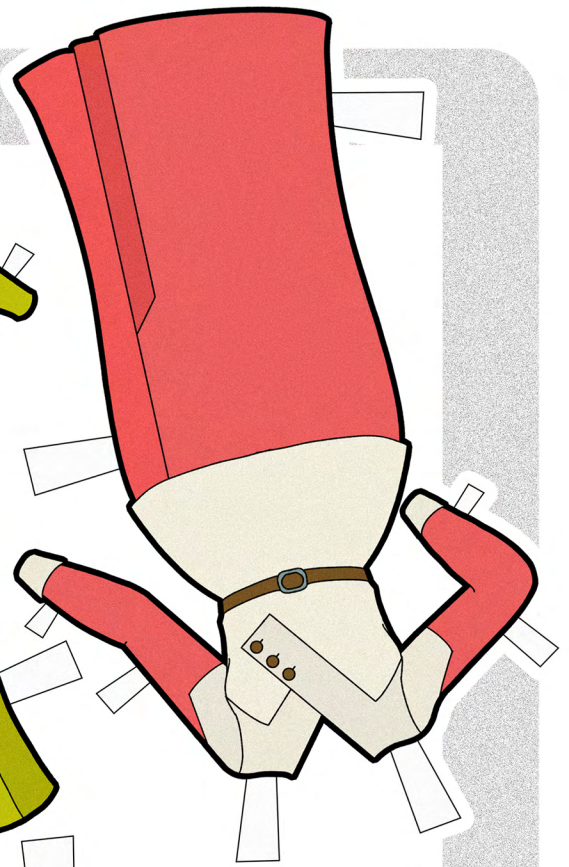
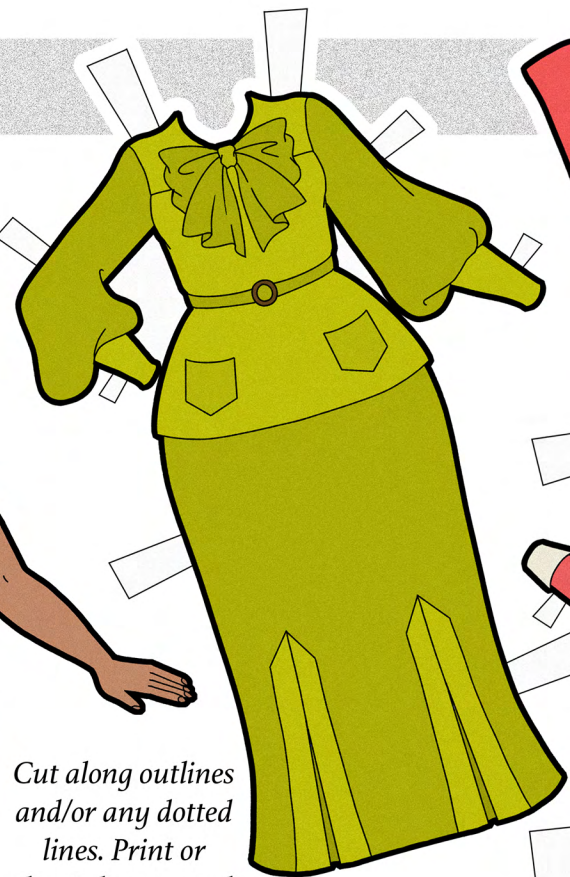
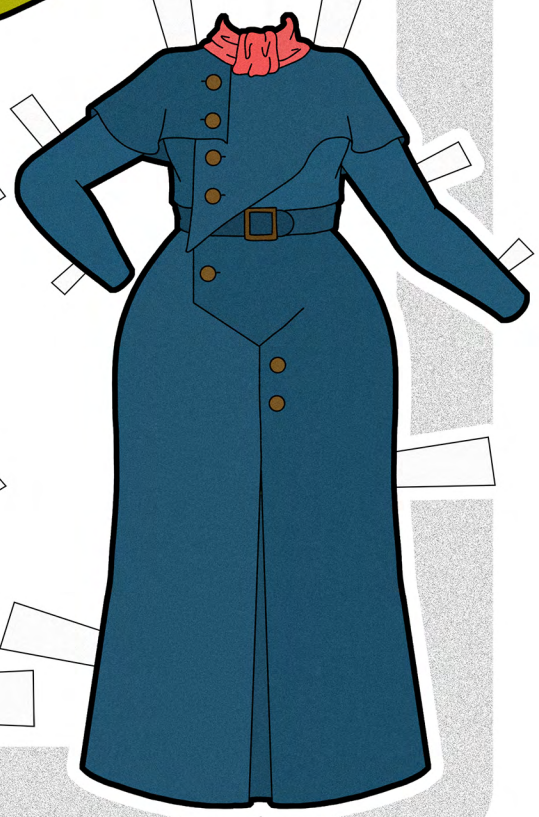
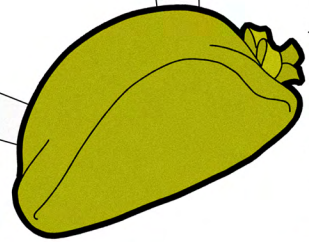
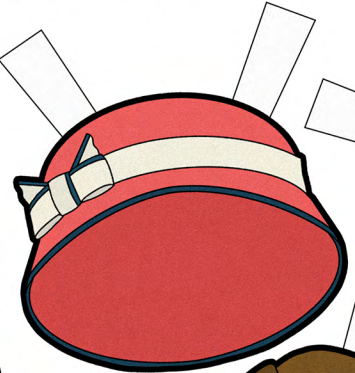


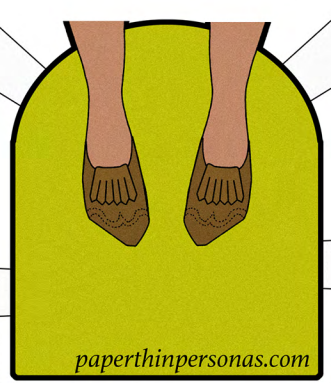
Cut along outlines and/or any dotted lines. Print or glue to heavy card.



Fashions from  
McCall's Style News  
September 1932



Ensemble Eclectica  
Rachel L Cohen Copyright 2024  
EST. 2008  
**PAPER THIN**  
PERSONAS  
Creations by Rachel Cohen  
paperthinpersonas.com



Threads of History: Fall 1932

paperthinpersonas.com