

# Amethyst

in Regency Era Underwear

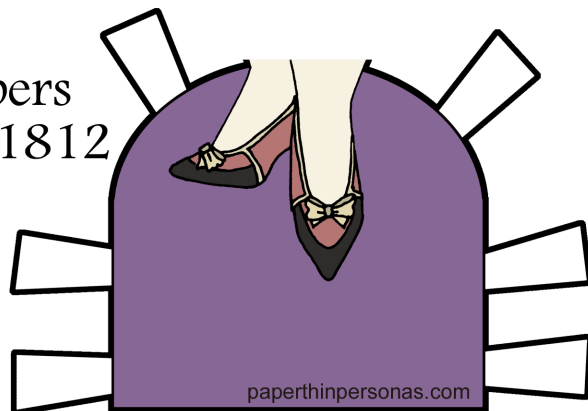
Shift circa  
1812  
Stays circa  
1811



Shoes  
1800-1810

Cut along dark  
lines and/or  
dotted lines.  
Mount or  
Print on Card.

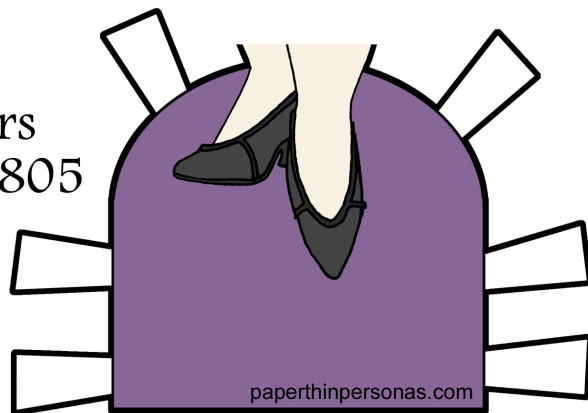
Slippers  
circa 1812



Slippers  
circa 1810s



Slippers  
1795-1805



Due to this paper doll's historical  
underwear, some of the  
Jewels & Gemstones paper doll clothing  
may not fit.