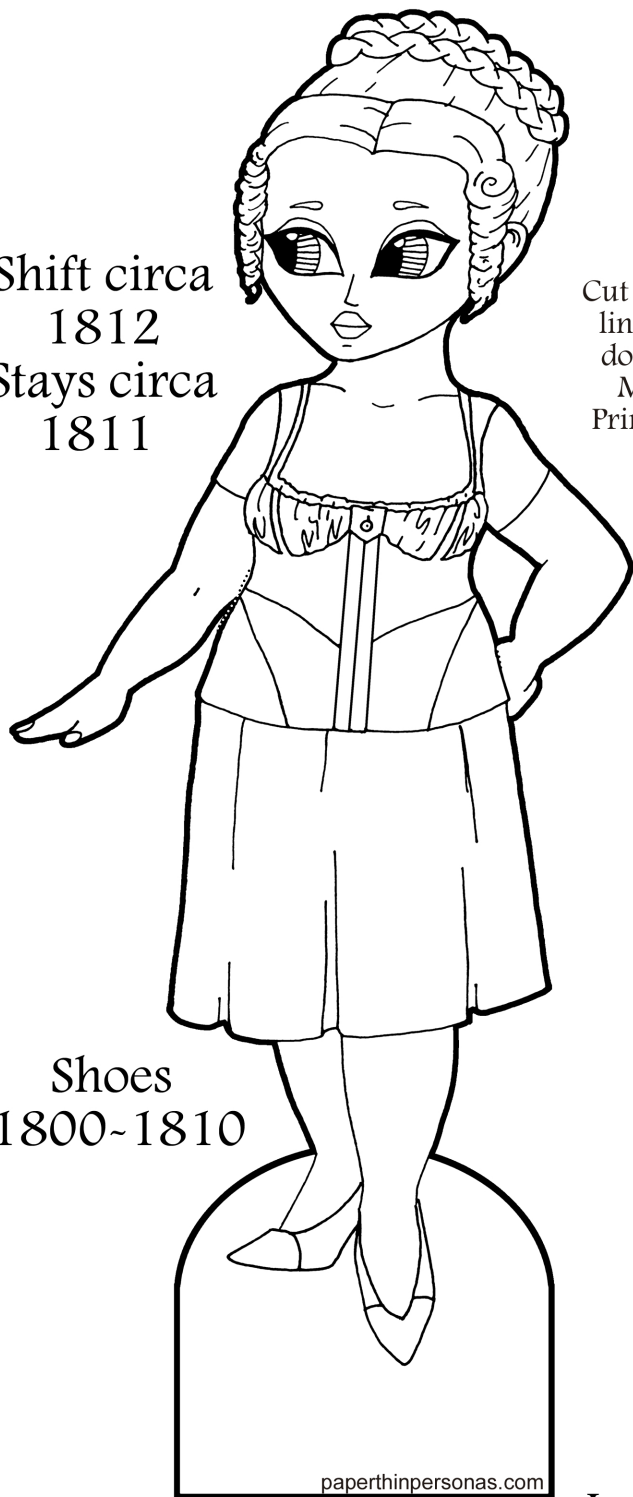


Amethyst

in Regency Era Underwear

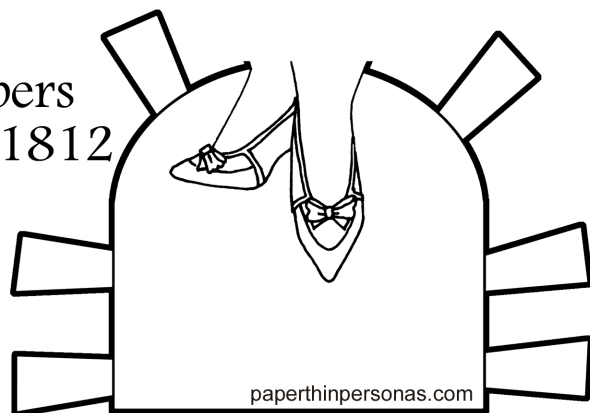
Shift circa
1812
Stays circa
1811



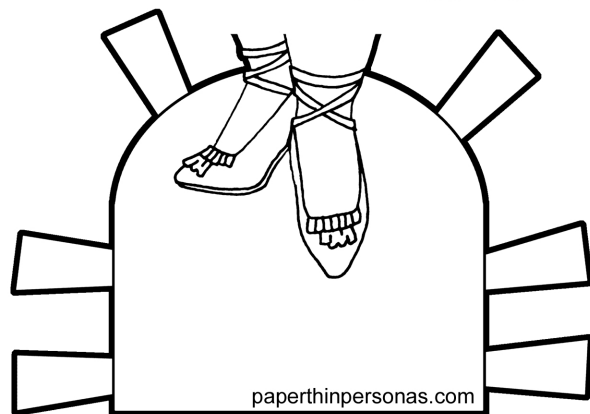
Shoes
1800-1810

Cut along dark
lines and/or
dotted lines.
Mount or
Print on Card.

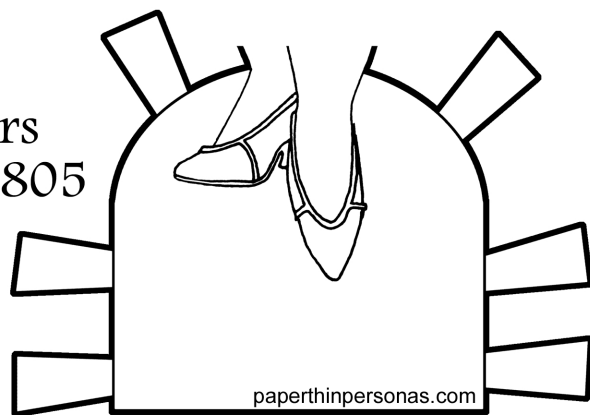
Slippers
circa 1812



Slippers
circa 1810s



Slippers
1795-1805



Due to this paper doll's historical
underwear, some of the
Jewels & Gemstones paper doll clothing
may not fit.