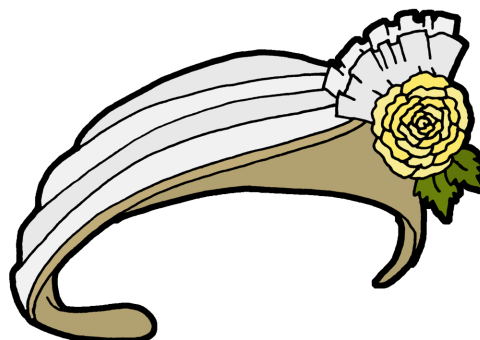


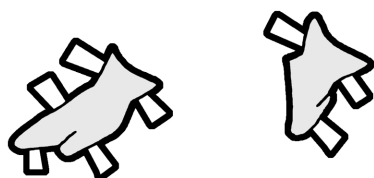
1950s Dresses: Early 1950s Summer Dress & Hat



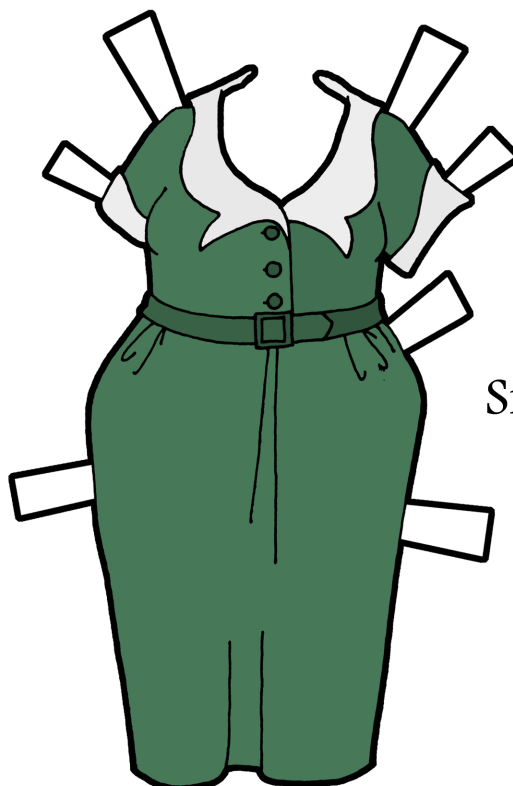
Floating Tab for the
Back of the Hat



Hat from
Montgomery Ward
Spring/Summer
1950 catalog



Purse circa
1953–1955



Simplicity 3572
circa 1951

Cut along dark
lines and/or
dotted lines.
Mount or
Print on Card.