

DAMES
&
DANDIES



HAT
CIRCA 1760

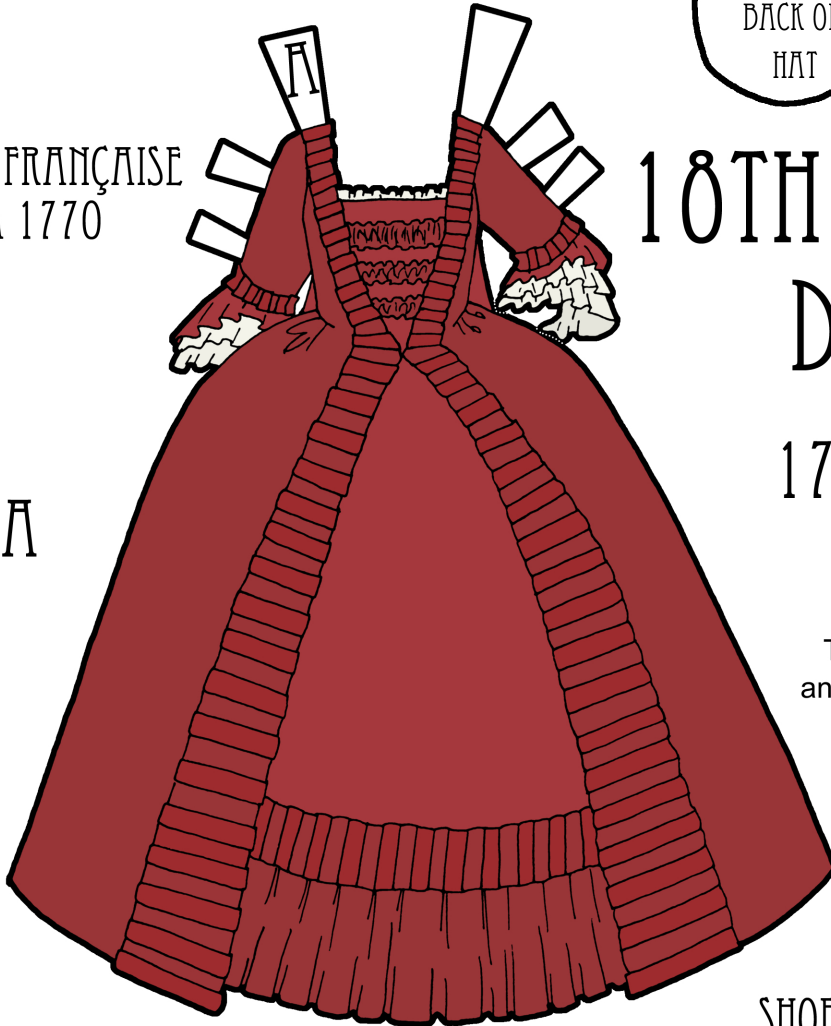
PASTE TO
BACK OF
HAT

ROBE À LA FRANÇAISE
CIRCA 1770

18TH CENTURY DRESS

1760-1780

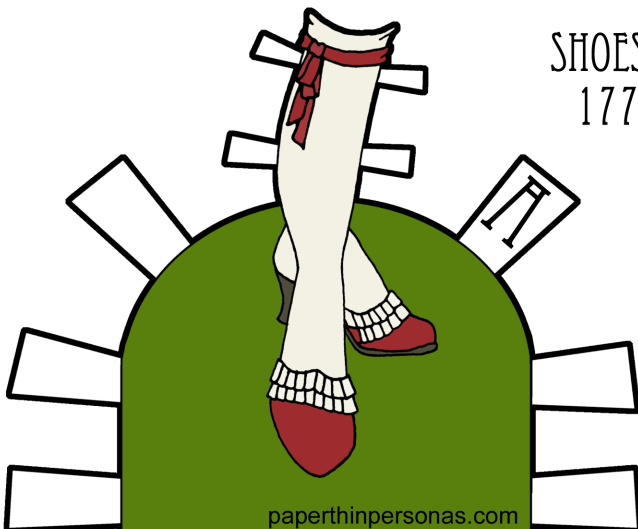
POSE A



Cut Along All
Thick Dark Lines
and/or Dotted Lines.
Paste to or
Print on Card.

SHOES (MULES)
1770-1780

SHOES TRIMMED FOR
PAPER DOLLS WITH
HISTORIC UNDERGARMENTS



paperthinpersonas.com



paperthinpersonas.com